

Somerville Nursery School

Brentwood Street
Wallasey
CH44 4BB
638 1567



SOMERVILLE FEDERATION

Newsletter – September 2025

Now taking applications for January & Easter 2026



Welcome to the Autumn Term

Following the summer break, it has been wonderful to see our returning children again and to welcome lots of new children. The children are settling well and are eager to explore and get to know the environment; build new relationships; and learn new routines and skills.

Please Be On Time

Please make sure your child arrives on time ready for their session and that you are prompt picking them up at the end of the session.

Please note that staff have their lunch from 12 - 12:30pm and staff meetings to attend from 3.30 p.m.

Please note that the gates are open approximately 15 minutes ahead of pick-up times. You must inform your child's teacher or the school office if you need to collect your child outside of these times i.e. for an appointment.

Please access Family Toolbox for advice and information about family life in Wirral:

<https://familytoolbox.co.uk/>



Change of Clothes

Please provide a bag with spare clothes for your child that can be kept in school (including socks). Even if your child does not have toileting accidents we still need a spare set for general accidents e.g. falling in a puddle!

For those children who are not yet toilet trained, please remember to put spare nappies and wipes in their bags.

Please ensure that all items of clothing and their bag are labelled clearly with your child's name.

Supporting independence

To support your child as they become independent, please consider what they are wearing to Nursery. **We would recommend that children wear jogging pants with an elasticated waist** as they can more readily manage these when accessing the toilets and changing facilities. We would also ask that children do not come to the Nursery in shoes with laces.

Many thanks for your support.



Website

www.somerville.wirral.sch.uk/

Please check the website regularly, the latest information can be found here. Please also sign up for our Instagram account



Attendance

If your child is absent from school for any reason, we ask that you **contact the nursery school office** before 9.00 a.m. on the first day of absence for morning children, and before 12.30 p.m. for afternoon children. You can do this by:

Phone - 0151 638 1567

School Matters!



You can also email us at: schooloffice@somervillenursery.wirral.sch.uk

School Office Hours

The office is staffed between 8:30 a.m. and 1.30 p.m. each day. Tel: 0151 638 1567

Arbor

Don't forget to sign up for Arbor and download the app. Arbor enables you to: keep track of your child's attendance; update contact details; access consents; and make payments!

Health & Safety

Please DO NOT allow your child/ren to access the Forest School areas or the playground equipment when you are on the nursery site - these areas are only for use with trained nursery staff.



Autumn term dates

Friday 24th October – Last day for children - close for the half- term

Monday 3rd November – school opens for autumn term 2

12th or 19th November
3.30-4.30pm - Parent / carer meetings -

Friday 14th November – **Children in Need Day** – Spotty theme! (Please do not spend money on a special outfit. We will be doing lots of fun things in the nursery and ask for a voluntary donation where possible – all proceeds will go to this worthwhile cause.)

16th-22nd November – **Road safety week**

Wednesday 10th December – **Christmas songs and craft** with parents / carers

Thursday 11th December – **Save the Children Christmas Jumper Day** (donations on the day. Children will be taking part in lots of exciting activities. However, we DO NOT expect you to buy a jumper / T-shirt especially for the event!)

Friday 19th December – **Christmas Party day & last day of term**

Monday 5th January – **INSET day** (staff only)
Tuesday 6th January – school opens for spring term



Fruit and snacks

Children are provided with a healthy snack at each session. This can be a selection of fruit, crackers, plain biscuits, cheese, breadsticks, fruit bread etc. and a drink of milk or water. **It is becoming increasingly difficult to fund fresh fruit for children. We ask for a small donation of £1 per week.** Pay weekly or every half term via your child's class teacher or at the office.

Lunches

If your child has packed lunches please make sure their lunch box and drink bottle are clearly labelled with their name. For safety reasons, please do not put your child's lunch in a plastic bag. Healthy lunches: please note that fizzy drinks, chocolate and sweets should NOT be provided. A good example of a healthy lunch might be:

- a sandwich, wrap or pot of pasta,
- a piece or pot of fruit
- a yogurt
- a carton of juice /water

We aim to be a nut-free setting and would appreciate your support with this.

Miscellaneous

Please note that children DO NOT need water bottles in nursery. They have access to water throughout their session. In general we ask that you do not send your child into the nursery with toys and other items from home as this can lead to distress if these items are forgotten or go missing. Please speak to staff if your child has a comforter and they will advise you how best to proceed.

Polite Request

Please do not use phones on school grounds and be mindful of the language used around the nursery. Please be polite and respectful at all times.

Applying for a place at Primary School

Although it may seem like your child has only just settled in F1, it's time to plan for their place at primary school!

If your child was born between 01/09/2021 & 31/08/2022, they will be due to start school in September 2026. You will need to make an application for a school place by January 15th 2026. Look out for more information soon.



Evidence Me

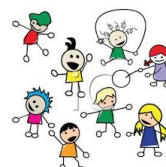
Please make sure that you are set up on 'Evidence Me'. The 'Parent Share' feature in Evidence Me enables you to view information and keep up to date on what's happening in nursery!

Should you have any difficulties accessing Evidence Me, please contact us and we will be happy to help.

Please note we do not provide regular observations / photo uploads. This is to ensure that staff can focus on high quality interactions with your child, scaffolding and supporting their development. However, you will receive confirmation of your child's key person and termly photo journals. Of course, we love to hear about your child's learning experiences at home via Evidence Me – please continue to send these through.
Please note that any communication about health and well-being should continue to be addressed by phone, email or in person.

Parent / carer stay & play sessions

After October half-term we will be running some stay & play sessions for our Butterfly children. More information to follow!





Why is good punctuality and attendance important?

Regular routines for young children enhance their sense of security and can also help to foster good habits for children's later life. Research shows that children with good attendance are at an advantage in later life and:

- find it easier to make and maintain friendships
- are more likely to gain good qualifications
- earn higher wages
- have a higher chance of being employed
- have higher self-esteem

Poor attendance and punctuality, even at the earliest age, can affect achievement in later life. Establishing good habits from the start helps children to settle more quickly into new settings and routines.

Strategies to encourage good attendance & punctuality:

- Have regular bedtime and morning routines
- Prepare for the morning routine by packing your child's bag the night before and setting out clothes
- Talk together about all the fun your child will have at nursery
- Arrange routine medical appointments, outings and holidays for times when your child does not attend nursery, wherever possible
- Talk to your child's key person if you have any concerns or anxieties
- Work with your child to develop healthy hygiene practices.

If you are facing difficulties getting your child to nursery, it is important to discuss this with us at your earliest opportunity.
We are here to help!