

Friday 10th September

Somerville News

Website: www.somerville.wirral.sch.uk

E-mail: schooloffice@somerville.wirral.sch.uk

Phone: 0151 638 5074

AIMING HIGH TOGETHER



WELCOME BACK TO A NEW SCHOOL YEAR

We would like to welcome all of our children back to school and extend the warmest of welcomes to all 87 of our new starters in Reception and children who have joined us

from other schools over the summer. It is lovely to see all of the children again and welcome them back to a school that looks more 'normal'. This is all the more special for those year groups that were with us before Covid. We are hoping to resume school trips and clubs this term. Further information will follow shortly.

We also have the pleasure of welcoming three new teachers and our new Site Manager.

Miss Pritchard is teaching in Year 1, Miss Hughes is teaching in Year 2 and Miss Barreiro in Year 3. Some of you will have already met Mr Moore, our site manager, as he ensures the schools grounds are safe in the mornings.

Staff have planned an exciting and challenging curriculum for this academic year. We invite you to share our vision for your child which is '**AIMING HIGH TOGETHER**' supporting the school by listening to your child read at least three times a week, ensuring they are on time and NOT LATE, not taking unnecessary time off and supporting your child with any homework they might get. We must remember that all of our children have been impacted by Covid absences and isolations. Even our new Reception children have had a completely disrupted Early Years education. We are working extremely hard as a staff to ensure every child catches up and gets to their AGE RELATED EXPECTATION but this will be extremely difficult to achieve for those children who are late to school and have lots of absence. Even a few minutes late impacts on how well a child can do in a lesson that has started without them, as the teacher is unable to start it again. For younger Reception children and KS1 children who are late this means they are missing out on the teaching that helps them learn to read. If they miss these lessons all learning becomes much more difficult as most other subjects require a child to be able to read.

This year we will be actively pursuing families who are persistently late or absent to ensure their child gets the best possible education. We will look at what support needs to be put in place for example, does a Family Support Worker need to be allocated from Wirral Early Help Teams to help establish morning routines or sleep hygiene courses attended when the child is too tired to get up on time. We do not like to pursue fines with the Local Authority however we will take this course of action if we feel it is necessary.

Dates for your Diary

**Wednesday 29th
September**

Whole school flu
immunisation day

Thursday 21st October

Year 3 trip to Martin
Mere

Friday 22nd October

Last day of term

**Monday 25th October -
Friday 29th October**

School closed for half
term

Monday 1st November

INSET Day - School
closed to pupils

Tuesday 2nd November

Children return to
school

Friday 17th December

Last day of term

**Monday 20th
December - Monday
3rd January**

Christmas Holidays

Monday 4th January

INSET day

Tuesday 5th January

Children return to
school

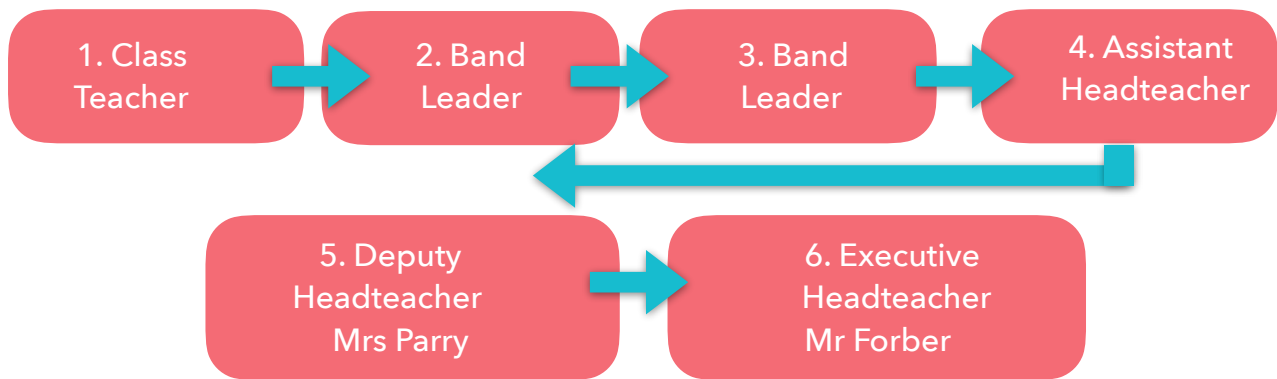


SCHOOL WEBSITE

Website: Please check the school website Class Pages for up to date information about your child's class. On the page you should be able to find out information such as when PE kits are needed to be worn and other information specific to your child's class.

COMMUNICATION

If you have an issue with your child or there is something you would like to know about your child's education please speak to the class teacher in the first instance. If the class teacher can not help follow the flow chart below until your issue is resolved. If you ask to speak to the Headteacher straight away you will be asked to follow the flow chart below first because in the vast majority of situations one of the members of staff within the flow chart will be able to sort your issue or respond to your query.



Band Leaders: FS2 - Miss Murray, Years 1 and 2 - Mrs Stevenson, Years 3 and 4 - Mrs Connolly, Year 5 - Mrs Speight, Year 6 - Mrs O'Shaughnessy

Assistant Headteachers: Reception and Key Stage One - Mrs O'Shaughnessy
Key Stage Two - Mrs Speight

SCHOOL INCLUSION TEAM

If you have any issues that are not specifically education related you can contact Miss Crampton or Mrs Parry and they can help support families with a range of issues, for example, they can organise electronic food bank vouchers, hygiene parcels, school jumpers / cardigans, they can refer to other agencies and organisations if specialist support is required for issues such as bereavement, family support for the effects of domestic violence, specialist work with children who are the children of a parent in prison etc.



If family circumstances suddenly change and you wish to let us know so we can keep an eye on your child during the school day, to inform us that your child may be unsettled or that the issue is significant enough to spend with a learning mentor then please let us know. They are there to help or signpost to the best agencies and organisations dependant on the situation.



SCHOOL CROSSING ON POULTON ROAD

Our faithful and dedicated Lollipop Man will be retiring at the end of this month after 17 years of service. He will be greatly missed especially by those who use the crossing on Poulton Rd. He was always ready to greet the children and parents and to stop for a chat during less busy times. We wish him the very best and know he will make the most of every day in his retirement. I am sure he would appreciate a thank you and goodbye from the children and families who cross with him every day.

PE KITS

It is an expectation that children will wear the correct PE Kit on the correct day. Own clothes on PE day is no longer an option. We have specifically chosen a kit that is as low a cost as possible. We do have a range of spare kits in school so if children attend in their own clothes we will have a clean kit ready for them to change into so they do not stand out from the rest of the class.

Please see kit list below which was first circulated in April, to give families plenty of time to find and purchase at the cheapest possible price. All of our kit can be found in the supermarkets and children can wear the school sweatshirt over their white t shirt on colder days and in the classroom as we are keeping the classrooms well ventilated. A separate sweatshirt does not have to be purchased.



- ◆ Plain white t shirt, with or without collar, with or without logo.
- ◆ Navy, black, grey leggings or jogging bottoms.
- ◆ Navy sweatshirt, with or without logo.
- ◆ A pair of plimsoles **WITHOUT** black soles to be kept **IN** school, in a pump bag for indoor PE. No rucksacks to be kept on pegs.
- ◆ A pair of sensible trainers to be worn for school on outdoor PE days.
- ◆ A pair of navy, black, grey shorts for indoor PE days.