

Somerville News

Phone: 0151 638 5074

E-mail: schooloffice@somerville.wirral.sch.uk

Website: www.somerville.wirral.sch.uk



ATTENDANCE AND PUNCTUALITY

This week every pupils attendance and punctuality has been reviewed. Over the next two weeks we will be sending some families letters explaining that their attendance has been flagged and is now being closely monitored and for others attendance and punctuality panel meetings will be arranged with either the local authority officer or senior leaders in school.

We have been out and about on welfare visits this week. Visits can take place for a number of different reasons:

- ▶ If home has not made contact with school on the day of absence.
- ▶ If there is no evidence to authorise absence such as doctors note, medicine etc.
- ▶ If pupils absence is lower than what it should be even though contact has been made.
- ▶ If a pupil was a persistent absentee the previous school year.
- ▶ If a pupil is absent for five school days in a row (we would visit a random sample)
- ▶ If school have been made aware family may be on holiday and a holiday form has not been submitted.
- ▶ If a pupil has a social worker.

Our primary concern is always welfare and to see if school can do anything to support the family. However, we do have to do all we can to make sure the children come to school for their education. Our most recent inspection identified that

'In the past, too many pupils did not attend school regularly enough. This has had a negative impact on their achievement. The school has put in place more rigorous systems to discourage poor attendance and reward those who attend well. As a result, there has been significant improvement. Nevertheless, some pupils are absent too often.'

We do understand children get ill however our absence figures should be in line with other schools and currently it is not, meaning we have to ensure support and challenge are both in place. Illnesses will always be authorised where there is evidence to support.

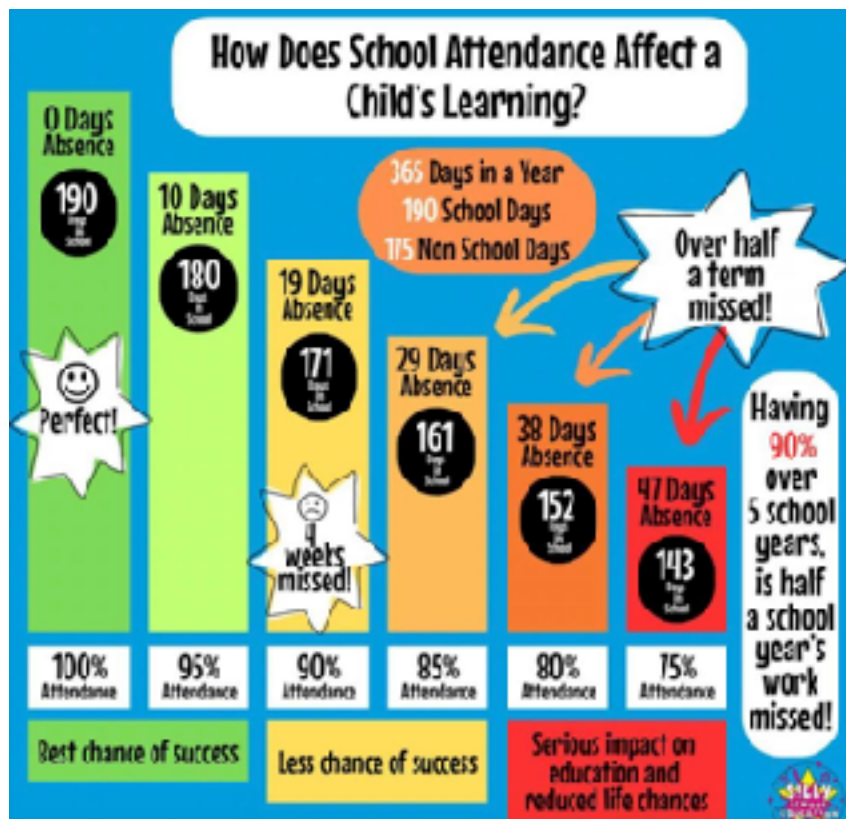
Dates for you Diary

December

Thursday 21st
School closes to pupil for Christmas holidays

January

Monday 8th
School opens to pupils for Spring Term



ORACY FAMILY DISCUSSION POINT OF THE WEEK

Should speed limits be lowered in your local area?

PARKING AND SAFETY AROUND SCHOOL

Last Friday a local authority officer visited school from 8.30 am to see and understand the traffic problems around school and the impact of these on the safety of our children. During this time lots of dangerous parking was observed particularly on bends, zigzags, double yellow lines and on pavements. It doesn't matter if the car is parked for 30 seconds or 30 minutes - the impact on safety is the same.



We will be working closely with the local authority on trying to resolve the issue. We have also requested that traffic monitoring doesn't take place on Poulton Road. In future this will happen on Northbrook Road and Park Road. Our school council will be leading on a project and we are also in the process of researching becoming a School Street.

GREEN TEAM

The Green Team have been busy AGAIN this week. They have been working to improve an area of Central Park for the benefit of the local community. They were out in the rain planting daffodil bulbs, ready to flower in the spring.



BLACK HISTORY MONTH

On the last day of term, we celebrated Black History Month. This is an annual celebration which takes place in the UK during October. The day was filled with a carousel of activities that celebrated the lives of black role models throughout history. The children enjoyed taking part in various workshops, presentations and discussions, which celebrate diversity. Please find some examples below.

ODD SOCKS DAY

Next week is anti bullying week. On Monday we will celebrate each of us being UNIQUE. We invite you all to wear to wear ODD SOCKS for school. This is not a day for donations it is about Somerville saying 'NO' to bullying and celebrating each and every persons uniqueness.

