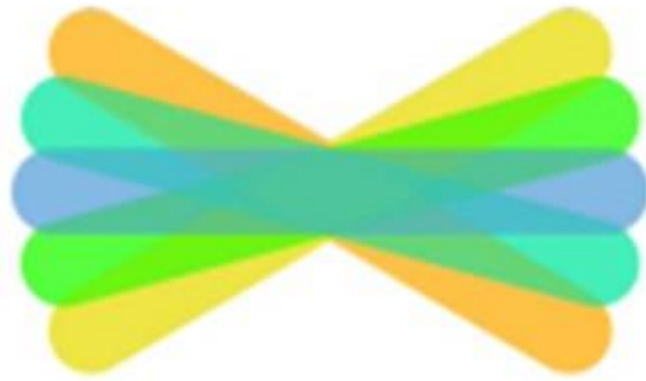


How to use Seesaw



Seesaw

How to log in

1. Go to <https://app.seesaw.me> on a computer. Or install the Seesaw **Class App** on an iOS or Android device.



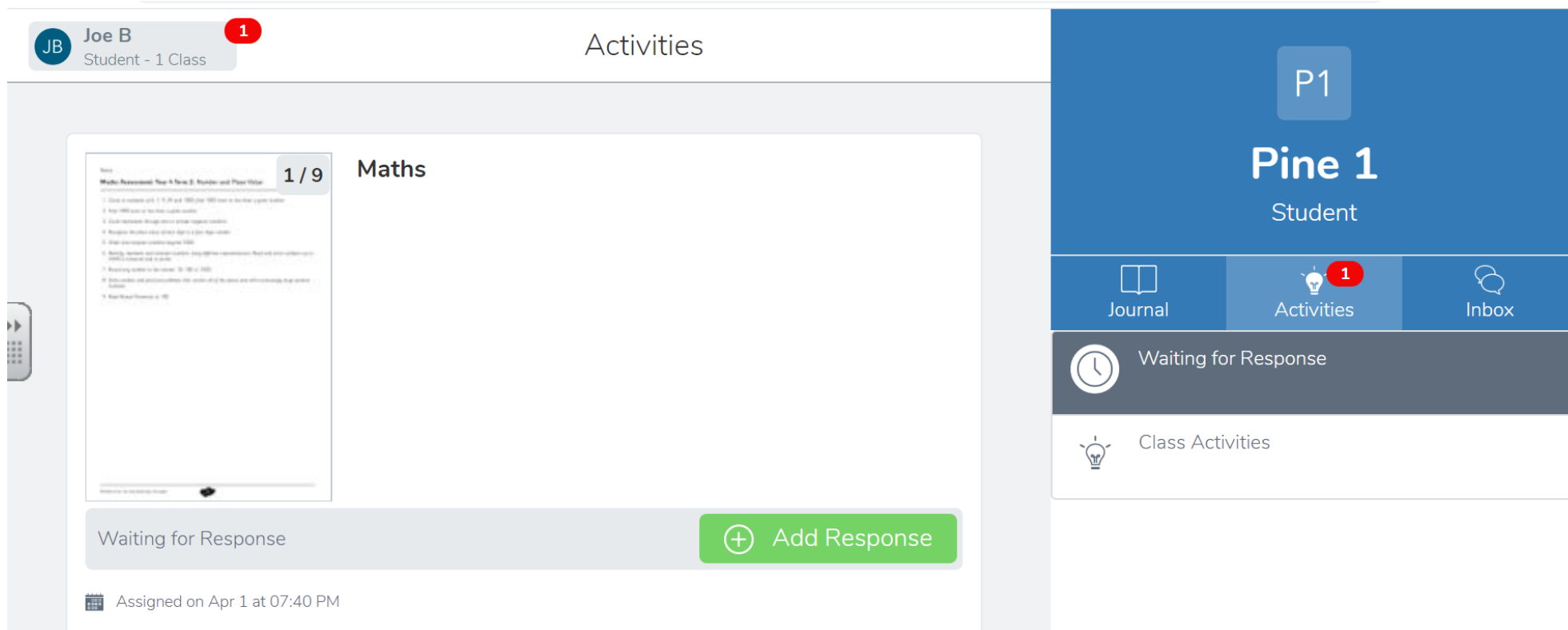
2. Choose "I'm a Student".



You will then need to enter in your child's unique 12 letter code or QR code which you can get by **emailing the year group email** that your child is in.

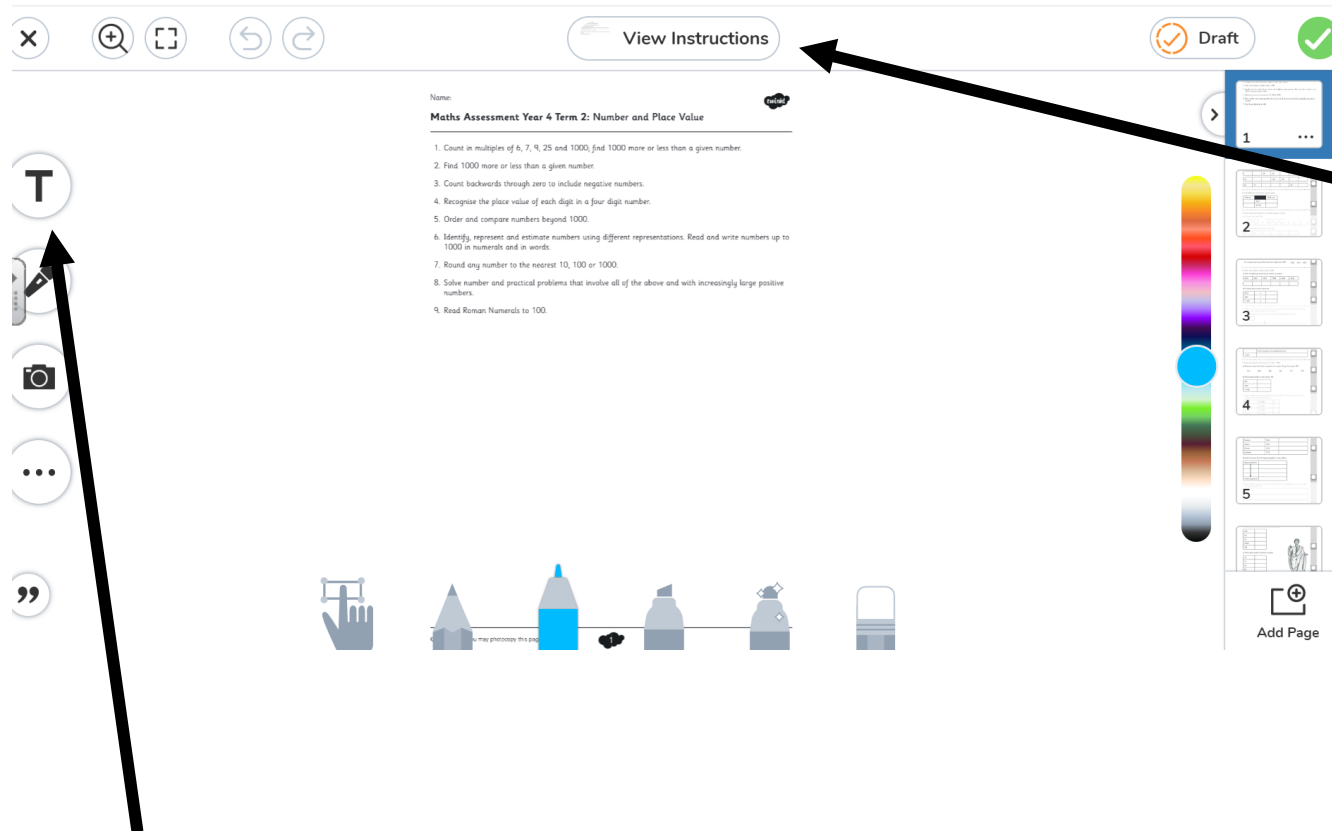
Example: `year4@Somerville.Wirral.sch.uk`

This should be the first screen that should appear.



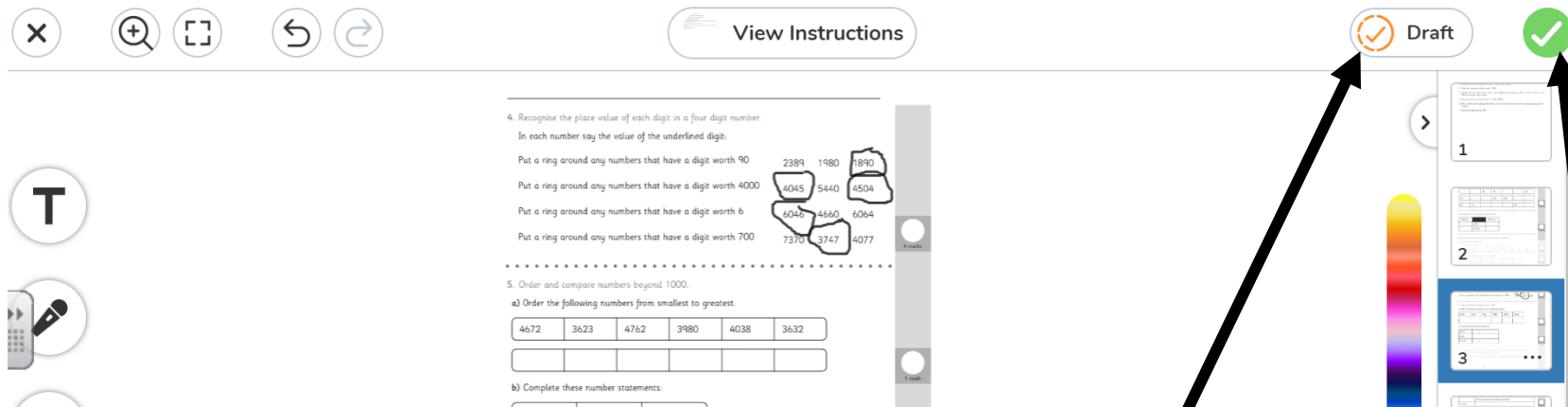
Click on add response to complete the activity that has been set.

The children can now use the tools to write, type, draw, highlight, etc... to complete their task.



Here you can view any instructions left by the teacher. There may be links to websites that can help your child understand the task they have been given Not all tasks will need instructions.

The type option is the easiest option for worksheets. You can change the size of the box to ensure it fits.



You may have the option to save the work as a draft and come back to it at a later point.

Once your child has finished their work click on the green tick.

Once the green tick has been clicked your child will not be able to go back and edit any of the work. This will then be sent straight to the class folder where all of the home learning will be kept.